



**Maharshi**  
Textile LLP



# About Us

MAHARSHI TEXTILE LLP (MTL) was established in the year 2017 at Morbi (Gujarat), India.

MTL boasts of an integrated plant equipped with sophisticated State-of-Art machinery for manufacturing  
**Denim fabrics.**



# Our Vision

**MTL Offers a wide range of high quality, basic and value added Denim in accordance with customer's specifications. We are committed to manufacture and supply Denim Fabrics to the Customers as per their requirements consistently and timely to ensure customer satisfaction.**



# Weave

1. 1/1 Plain weave
2. 2/1 and 3/1 Twills
3. Broken Twills
4. 4/1 Satins
5. Herringbone Twills
6. Dobby

# Product Range

1. OE x OE – Basic Denim
2. Ring x Ring
3. Ring x OE
4. Structured (Dobby) Denims
5. Multi-count denim fabrics
6. Poly Stretch fabrics.
7. Light to heavy weight (5 oz to 14 oz) denims

# Shade

1. Normal Indigo Blue
2. Super Dark Indigo Blue
3. Sulphur Bottom Indigo  
Top Shades
4. Indigo Bottom Sulphur  
Top Shades
5. Sulphur Shades
6. Various Combination  
Shade

# Finishing

1. Mercerize
2. Flat Finish
3. Wet Finish
4. Different type of coating  
with different color



# Fabric

77001



77002



77003





# Fabric

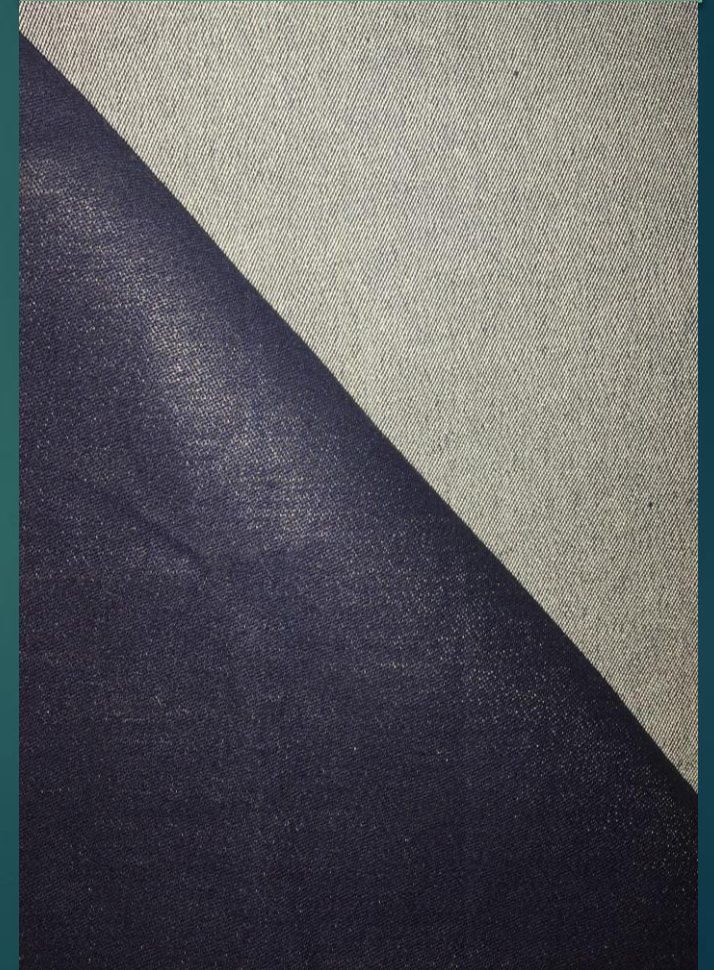
77004



180204



77005





# Fabric

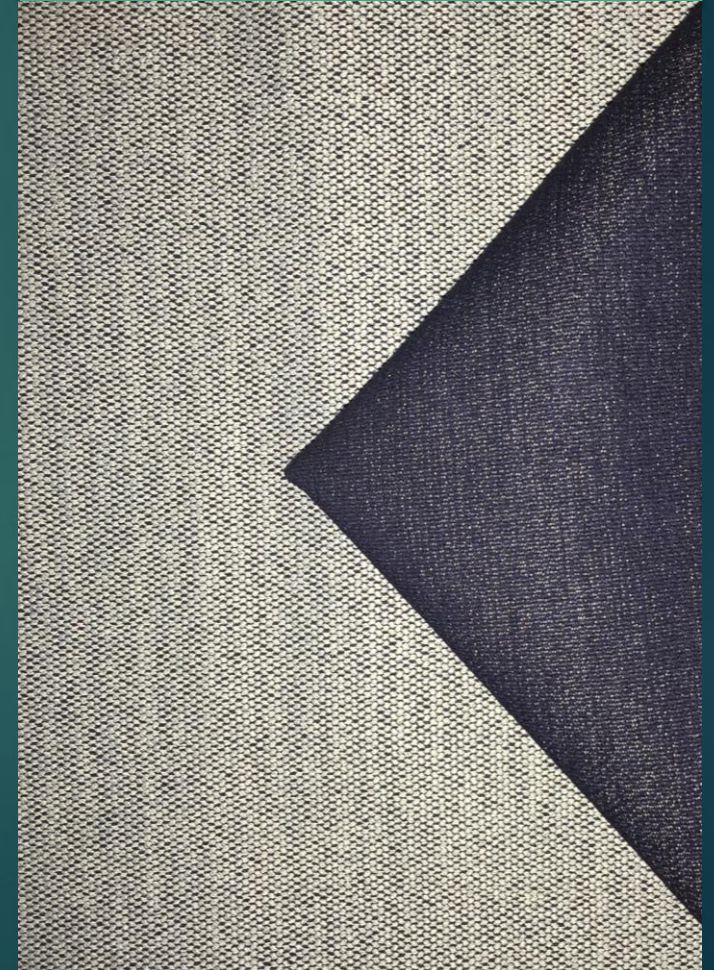
77006



77007



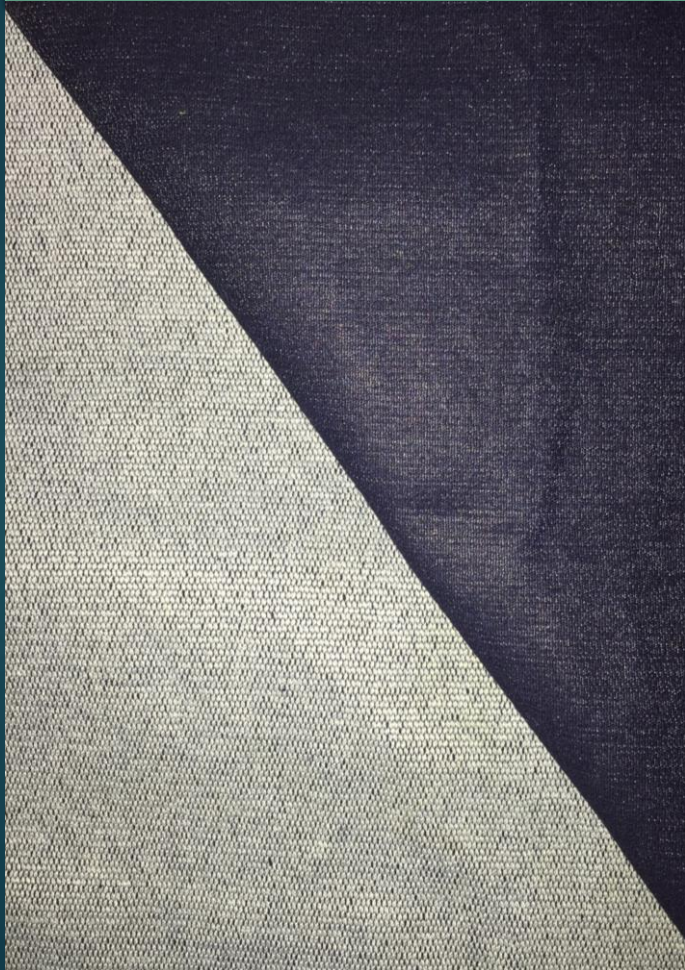
77008





# Fabric

77009



77010



77011





# Fabric

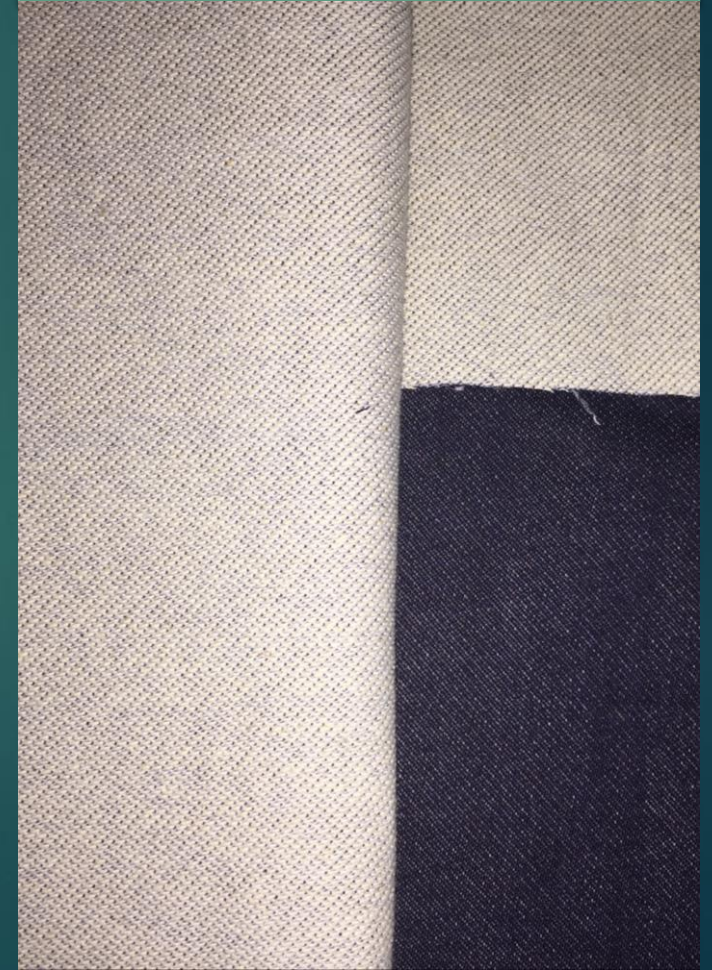
77012



77013



77014



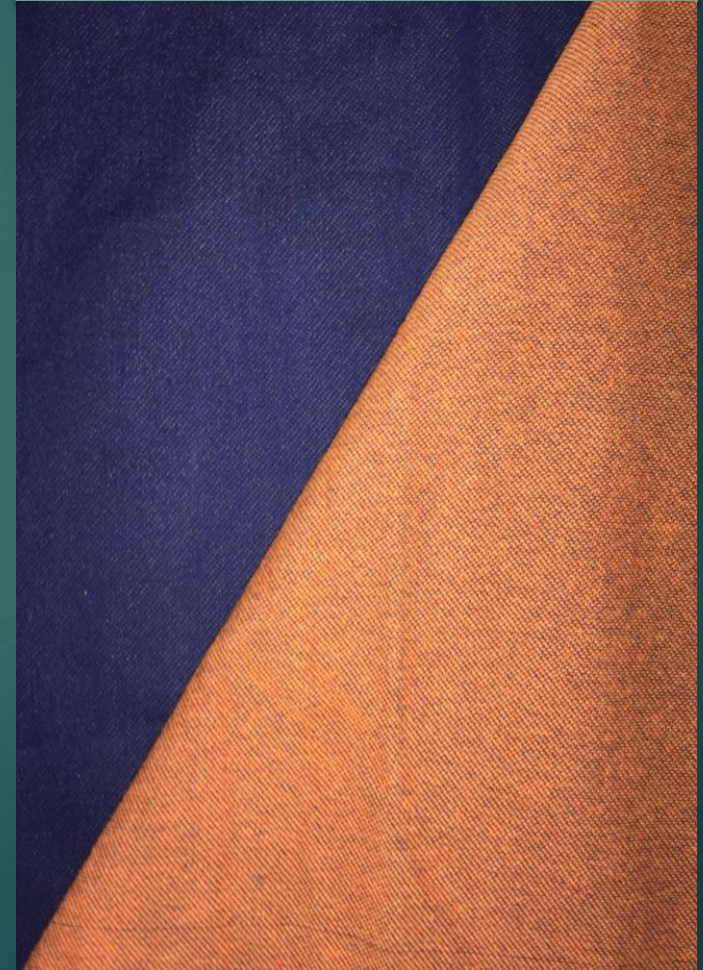


# Fabric

77015



77016







**Address- Survey no. 58-1/2, Lilapar Road, Canal Rd, Lilapar, Gujarat 363641**

**Contact no:- 9913624500**

**Email id- maharshitextilellp@gmail.com**